

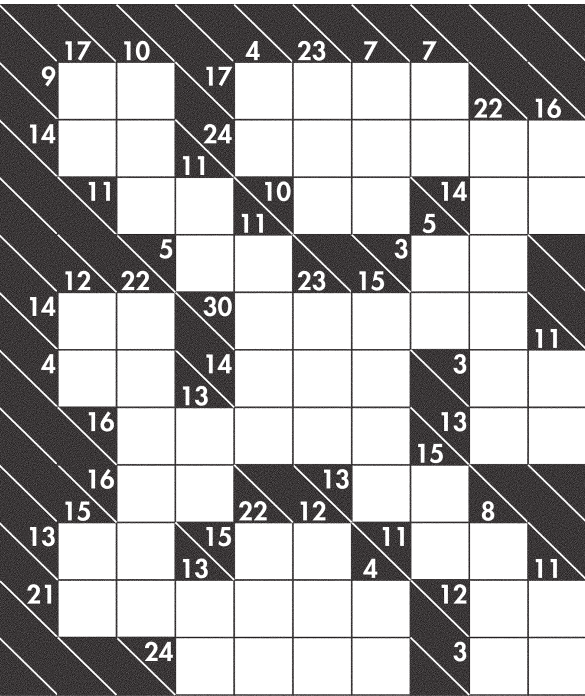
PUZZLE ANSWERS ON NEXT PAGE

More puzzles and games in the Find section

Friday Fun

KAKURO

How to play: Fill in the squares using any number from 1 to 9, without repeating any numbers in a run line (row or column blocked off by black boxes). Numbers in each horizontal run line must add up to the sum shown in the black box to its left (above the diagonal). Numbers in each vertical run must add up to the sum shown in the black box at its top (below the diagonal).



ISAAC ASIMOV'S SUPER QUIZ

How to play: Score 1 point for each correct answer on the Freshman Level, 2 points on the Graduate Level and 3 points on the Ph.D. Level.

Subject: ANIMALS "B"
Each answer is the name of an animal starting with "B." (e.g., Symbol of Toronto's baseball team.

FRESHMAN LEVEL

- 1. A.A. Milne created a famous one.
Answer _____
- 2. A national animal of the U.K.
Answer _____
- 3. A national animal of Canada.
Answer _____

GRADUATE LEVEL

- 4. It's commonly called a (American) buffalo.
Answer _____
- 5. Smaller than the Canadian lynx but twice as large as the domestic cat.
Answer _____

- 6. It shares its name with a long scarf of feathers or fur.
Answer _____

PH.D. LEVEL

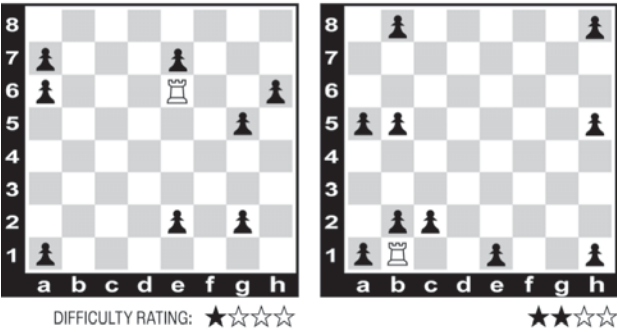
- 7. The closest extant relative to humans.
Answer _____
- 8. Emily Dickinson called this bird "The Rowdy of the Meadow."
Answer _____
- 9. A scarab, for example.
Answer _____

SCORING: 18 points — congratulations, doctor; 15 to 17 points — honors graduate; 10 to 14 points — you're plenty smart, but no grind; 4 to 9 points — you really should hit the books harder; 1 point to 3 points — enroll in remedial courses immediately; 0 points — who reads the questions to you?

• Reprinted with permission from Barracade Books Inc. North America Syndicate Inc. (c) 2010 Ken Fisher

PAWN MOWER

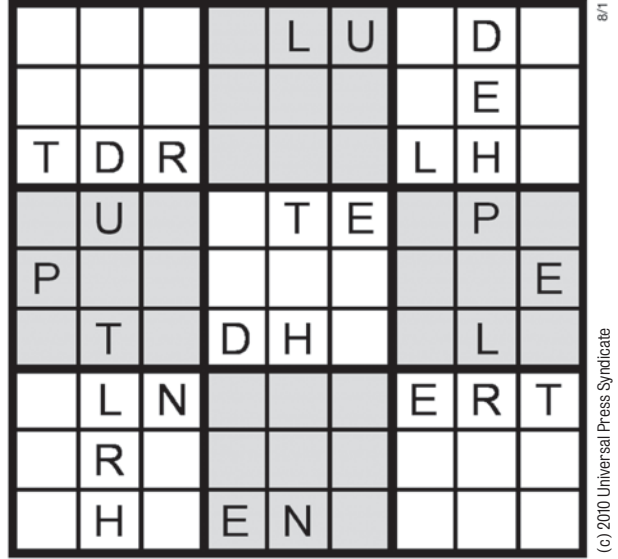
Game instructions: Use the rook to eliminate all the pawns on the board. Pawns are captured by moving to the square they are standing on. The number of moves in the solutions depends entirely on the number of pawns to be removed (5 pawns will require 5 moves). You cannot move to an empty space. Write your answers below for each puzzle with the letter and number of each square to which the rook must move.



How to play Pawn Mower
Remember, a rook moves vertically and horizontally. It can get rid of all five pawns by moving right, then down, then left, and then right. Five pawns, five moves. An efficient way to describe this is by writing the moves out in order, like this:
h5 h1 a1 a8 g8
Learn more from grandmaster Maurice Ashley at mauriceashleychampions.com

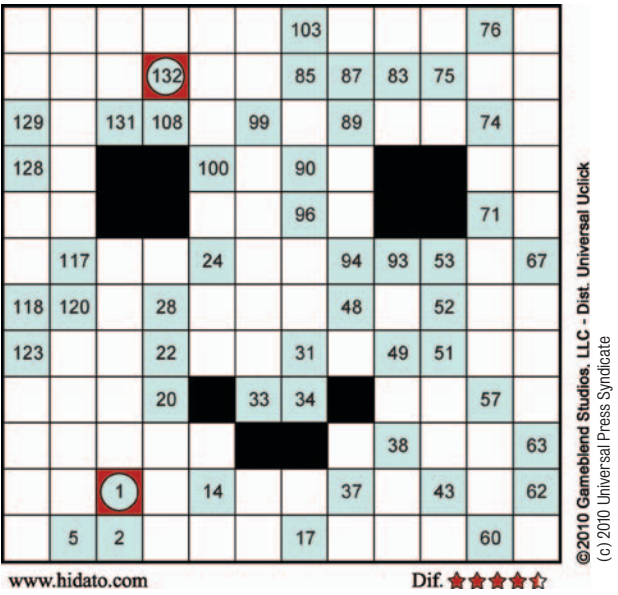
SUDOKU WORD

Complete the grid so that every row, column and 3x3 box contains the letters DEHLNPRTU in some order. One row or column contains a 7-letter word — what is it?



HIDATO

How to play: Find the path — complete the grid so that numbers 1-96 connect horizontally, vertically or diagonally.



WHATZIT?

How to play: Find the familiar phrase, saying or name in this arrangement of letters.



Solution: _____

WORD SCRIMMAGE

How to play: Make a 2- to 7-letter word from the letters on each yardline. Add points to each word or letter using scoring directions. Seven-letter words get a 60-point bonus. All words can be found in Webster's New World College Dictionary.

Time limit: 20 minutes

BY JUDD HAMBRICK

1st DOWN
+50 pts

O₂ T₂ L₂ C₆ A₂ A₂ S₂

2nd DOWN
+7 pts

M₆ C₆ A₂ I₂ Y₇ D₃ N₂

3rd DOWN
+40 pts

C₆ S₂ S₂ E₁ U₃ O₂ R₂

4th DOWN
+60 pts

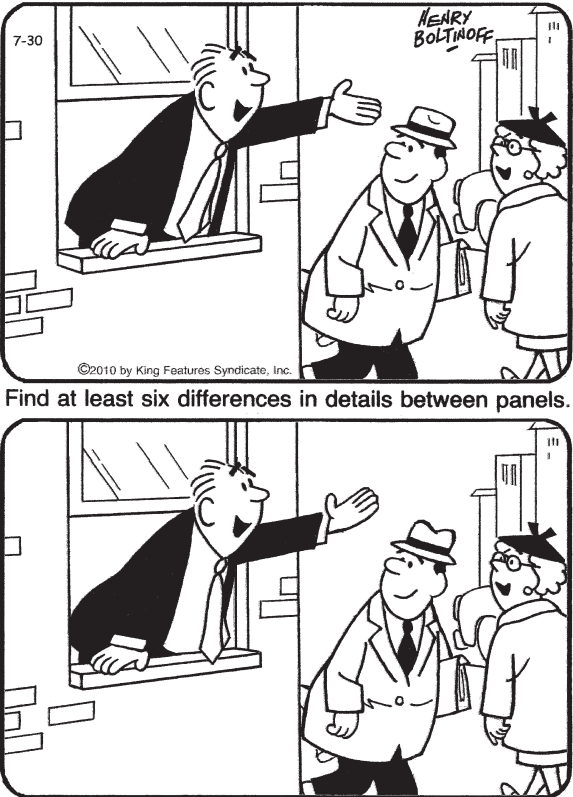
A₂ I₂ O₂ G₃ N₂ C₆ V₇

Average game: 230-240 points

Four play total: _____

HOCUS-FOCUS

BY HENRY BOLTINOFF



Find at least six differences in details between panels.
Differences: 1. Hand is moved. 2. Tie is moved. 3. Building is smaller. 4. Brick is moved. 5. Window is smaller. 6. Hat is different.

Kids Across/Parents Down®

By Jan Buckner Walker

Enjoy fun time with Mom, Dad or your favorite grown-up. The across clues are for kids and the down clues are for adults.

Kids Across

- 1. The color of most sheep
- 4. A female sheep (and a homonym of "you")
- 6. If a sheep had a shoe, it would wear it on its _____
- 7. A group of sheep
- 8. Color of a dark sheep that stands out in a crowd
- 9. Wool wear: The pattern on a traditional Scottish kilt
- 10. Fluffy baby sheep
- 14. A man who cares for and helps to guide sheep

- 18. A male sheep known for its curled horns
- 19. A forest animal that a sheep fears
- 20. The nursery rhyme man who had a farm (ee-i-ee-i-oh): _____ MacDonald

Parents Down

- 2. Problem of a wide-eyed one who finds himself counting sheep
- 3. Material that reaps revenue for a sheep farmer
- 5. A sleepy sheep-counter wants about 40 of them

- 7. Given to suggestion: What a person with "sheep-ish" tendencies readily does
- 8. Sheep's call
- 11. Sheep's mountainside habitat
- 12. Lost and found: Little Bo's surname
- 13. 14A's tall stick with a crook (or his group of workers)
- 15. A gathering of 4As and 18As
- 16. Soundtrack to a sheepskin ceremony: "_____ and Circumstance"
- 17. Where you could go to see sheep in the city

Time to Go to Sheep



www.kapd.com

This Week's Solution



American Diabetes Association®



STOP DIABETES

Did You Know? 1 in 3 American children born today will face a future with diabetes if current trends continue. That number is closer to 1 in 2 for disproportionately affected populations including African Americans and Hispanic/Latinos.

You Can Make a Difference. Join us on Saturday, October 9, 2010 for our annual Step Out: Walk to Fight Diabetes on Monument Avenue at Monroe Park. This 5k walk raises awareness and funds for this potentially life-threatening disease. Register today at www.diabetes.org/stepoutrichmond or by calling 888-DIABETES. Together we can Stop Diabetes.

For more information, contact Elisabeth King at the American Diabetes Association at eking@diabetes.org or 225-8038 ext. 3255.

Thanks to the generous support of our sponsors:

ACCU-CHEK®

Anthem.



BON SECOURS RICHMOND HEALTH SYSTEM



The mission of the Association is to prevent and cure diabetes and to improve the lives of all people affected by diabetes.